

What are the ESF/ERDF funds and what is the connection with R&I?

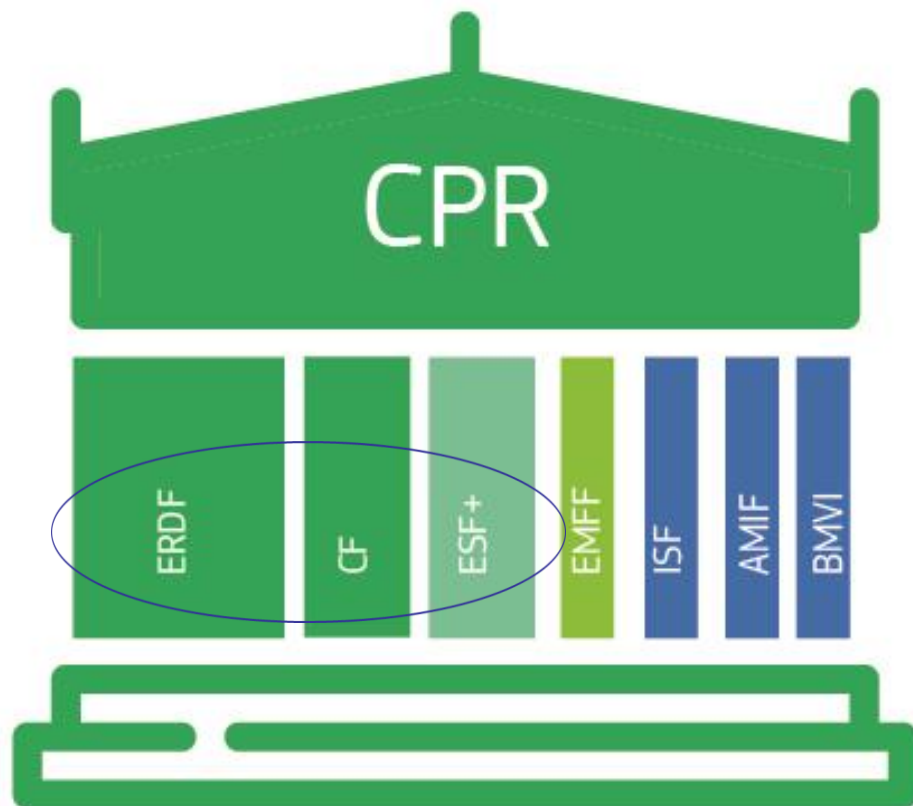
Mutual Learning Workshop on Gender
in ESF/ERDF funds
12th May 2021

Silvia Álvarez Santos
G.2 Portugal and Spain
DG Regional and Urban Policy

#CohesionPolicy
#EUinmyRegion



European Structural and Investment Funds 2021- 2027



+ JTF

CPR covers delivery.
1 set of rules is:

- More coherent
- Simpler to learn
- Simpler to combine



A modern, dynamic policy 2021 - 2027

Modern investment

- Focus on transition to smart, low-carbon economy
- Stronger conditions & link to European Semester
- Comprehensive performance data (in near real time), open data

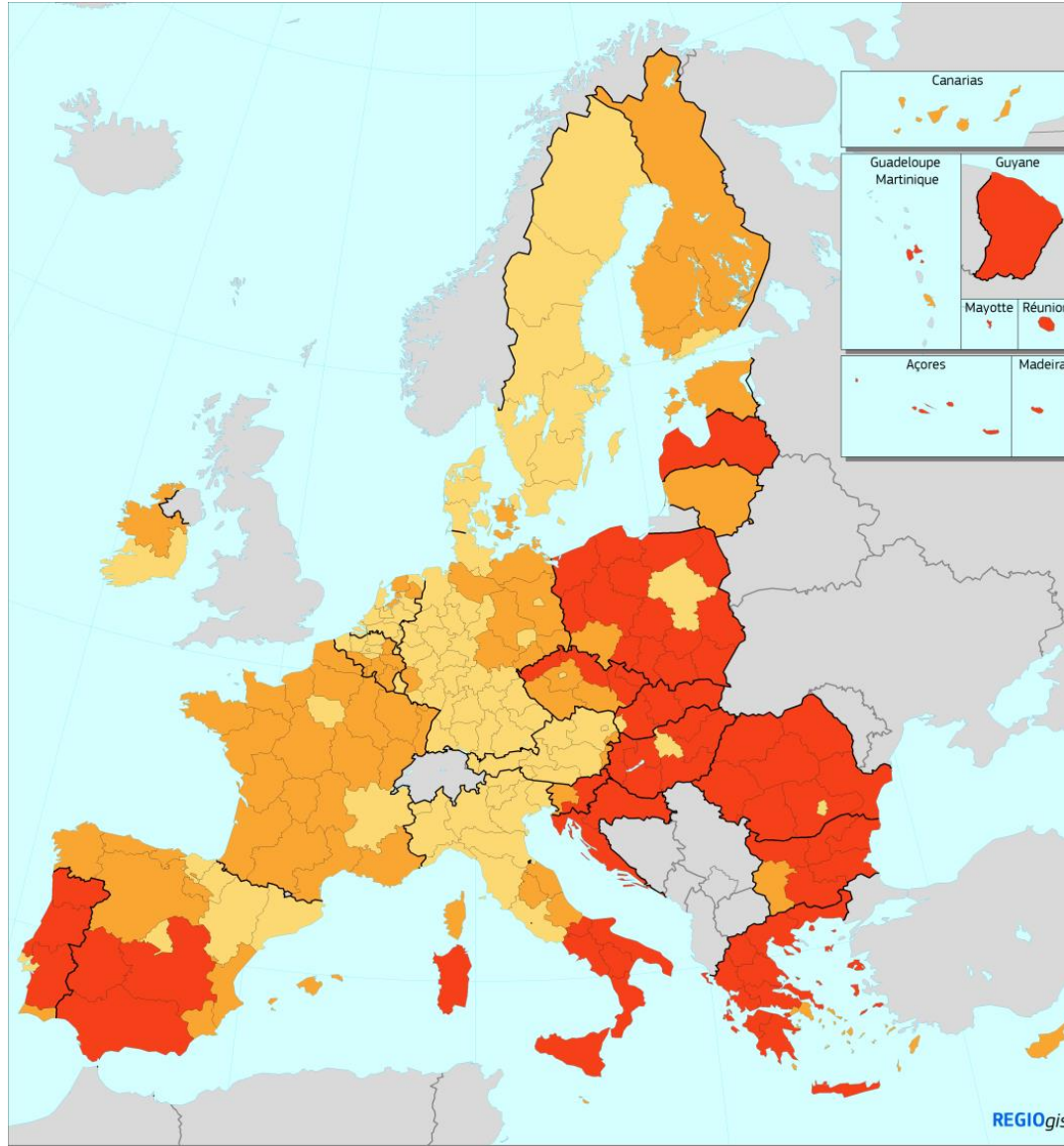
Simple, flexible, dynamic

- 8 funds, 1 regulation
- 80 key administrative simplifications
- Faster implementation
Responsive to emerging needs (migration, economy, pandemic)

For all regions

- Balanced and fair "Berlin method"
- 85% to poorest regions, where most needed
- Tackling emerging needs and economic transition across the EU

New regional eligibility map 2021-2027



GDP/head (PPS) by NUTS2 region, average 2014-2015-2016

Index, EU-27 = 100

- < 75% (less developed regions)
- 75% - 100% (transition regions)
- >= 100% (more developed regions)



Policy objectives

11 objectives simplified and consolidated to 5:

1. A smarter Europe (innovative & smart economic transformation)
2. A greener, low-carbon Europe (including energy transition, the circular economy, climate adaptation and risk management)
3. A more connected Europe (mobility and ICT connectivity)
4. A more social Europe (the European Pillar of Social Rights)
5. A Europe closer to citizens (sustainable development of urban, rural and coastal areas and local initiatives)

2 horizontal objectives:

- Administrative capacity building
- Co-operation between regions and across borders (embeds co-operation in mainstream)

ERDF thematic concentration

- Maintaining spending in the key areas for growth and jobs
- At national level based on GNI per head => flexibility

For countries with:	minimum % PO1 ("smarter Europe")	minimum % PO2 ("greener, low carbon Europe")
GNI below 75%	25%	30%
GNI 75-100%	40%	30%
GNI above 100%	85% for PO1 and PO2	30%

- 8% of budget to urban development, delivered through local development partnerships

Enabling conditions

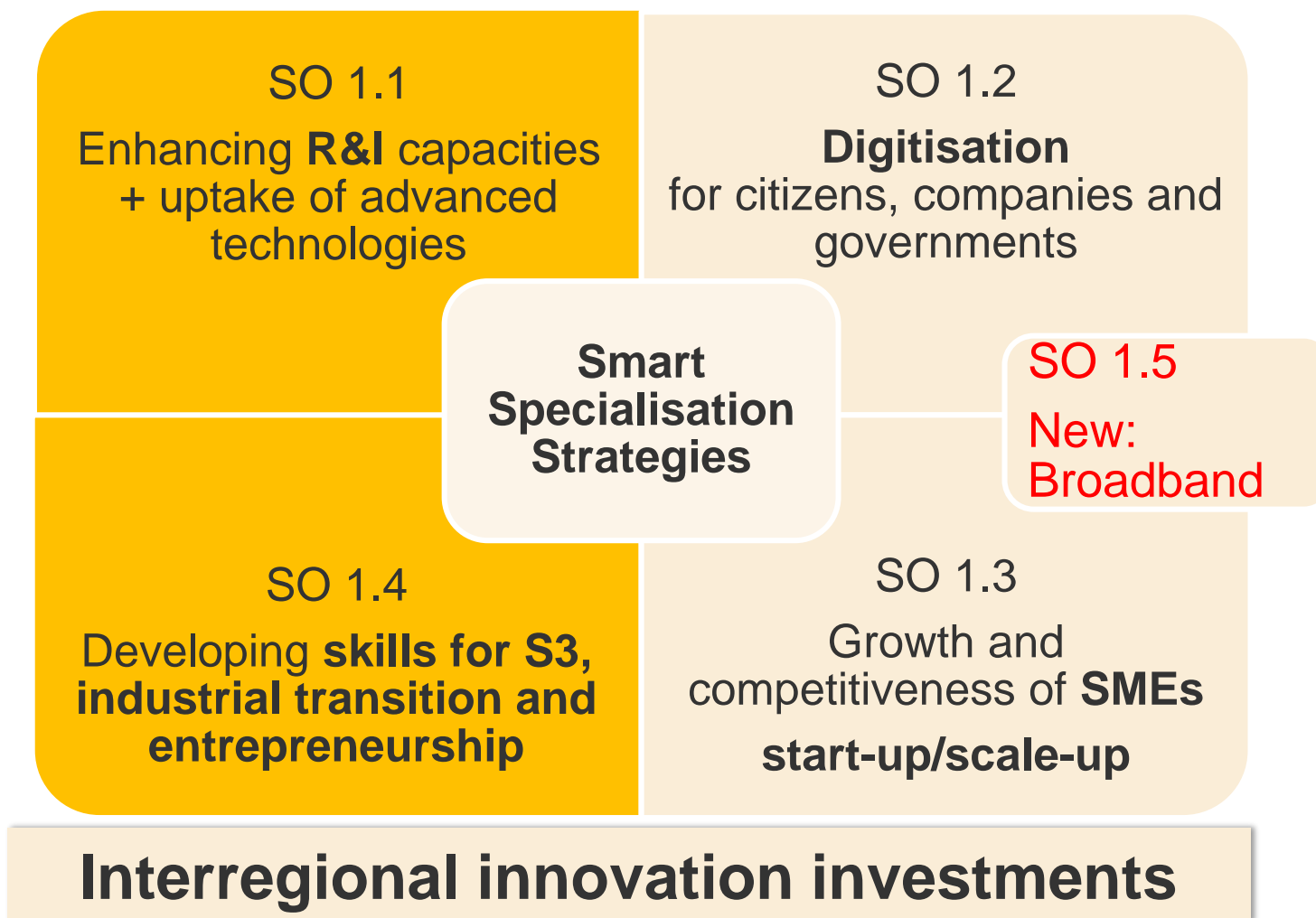
- **Horizontal:**

- Public procurement, State aid, Charter of Fundamental Rights, United Nations' Convention on the Rights of Persons with disabilities

- **Thematic:**

- Smart specialisation strategies
- Policy framework for energy efficiency, renewable energy
- National plans on water and wastewater, waste management, prioritised action framework for nature conservation
- National/regional broadband plan
- Transport plan
- Policy framework : labour market, gender equality, education, health, social inclusion and poverty reduction, Roma inclusion, etc

Policy Objective 1: A smarter Europe by promoting innovative and smart economic transformation



EC - Enabling condition for smart specialisation

Policy objective	Specific objective	Name of enabling condition
1. A smarter Europe by promoting innovative and smart economic transformation	ERDF: Specific objectives referred to in Article 2(1)(a)(i) and (iv) of ERDF-CF Regulation	Good governance of national or regional smart specialisation strategy

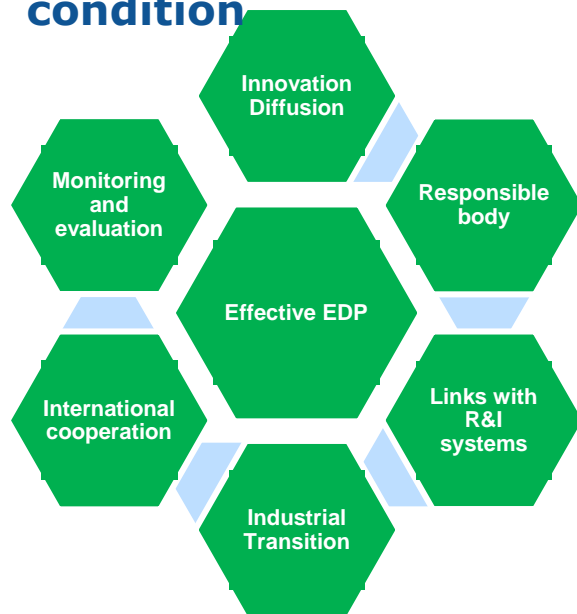
Fulfilment criteria for the enabling condition

Smart specialisation strategy(ies) shall be supported by:

1. Analysis of challenges including bottlenecks for innovation diffusion and digitalisation
2. Existence of competent regional / national institution or body, responsible for the management of the smart specialisation strategy
3. Monitoring and evaluation tools to measure performance towards the objectives of the strategy
4. Functioning of stakeholder co-operation ("entrepreneurial discovery process")
5. Actions necessary to improve national or regional research and innovation systems, where relevant
6. Where relevant, actions to support industrial transition
7. Measures for enhancing cooperation with partners outside a given Member State in priority areas supported by the smart specialisation strategy

ERDF for research and innovation: regulatory requirements

Smart specialisation as an enabling condition



ERDF Scope

Activities for applied research and innovation, including industrial research, experimental development and feasibility studies

In selecting operations, the managing authority shall ensure that selected operations comply with the programme, including their consistency with the relevant strategies underlying the programme, as well as provide an effective contribution to the achievement of the specific objectives of the programme

Specific objectives

- Developing and enhancing research and innovation capacities and the uptake of advanced technologies
- Developing skills for smart specialisation, industrial transition and entrepreneurship

Interregional innovation investments

- New type of interregional cooperation linking smart specialisation strategies → commercialisation and scaling up of interregional innovation projects having the potential to encourage the development of European value chains

- Supported by ERDF:

https://ec.europa.eu/info/sites/default/files/dg_regio.pdf

- Implemented by direct management:

https://eisma.ec.europa.eu/programmes/interregional-innovation-investments_en

- JRC S3 thematic platforms:

<https://s3platform.jrc.ec.europa.eu/thematic-platforms>

Synergies: Potential benefits for EU regions and their key stakeholders



Seal of Excellence

Pipeline of excellent R&I projects identified for funding

Leverage of Horizon Europe mechanisms and visibility + economic impact at regional level



Support to Partnerships

ERDF as MS contribution in Horizon Europe partnerships
major incentive for participation of regional actors + alignment towards common EU priorities

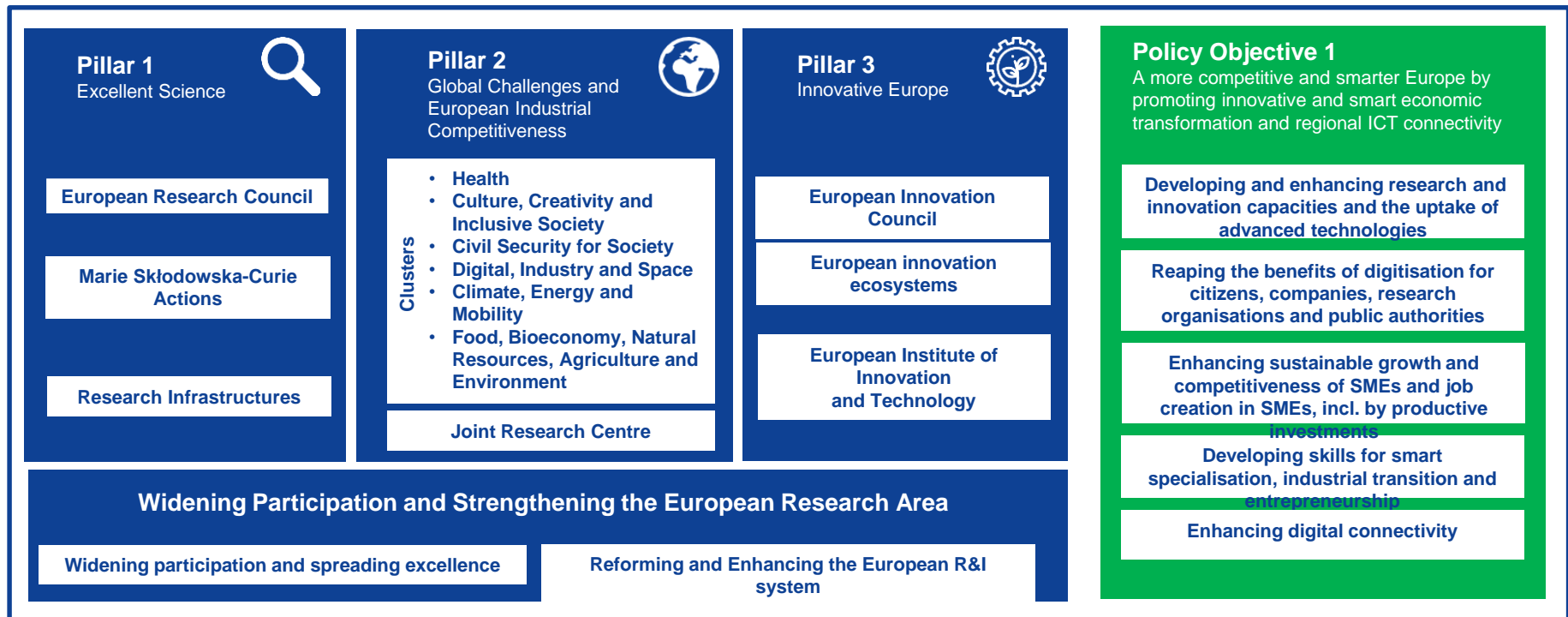


Transfer possibility

relieves regional ERDF Managing Authorities from setting up a full administrative system for evaluating and following projects + learning effect for firms entering Horizon Europe

- **ERDF** (« regional relevance », smart specialisation, innovation diffusion)
- **Horizon Europe** (« European excellence »)

Horizon Europe and Cohesion Policy: Working for Innovation



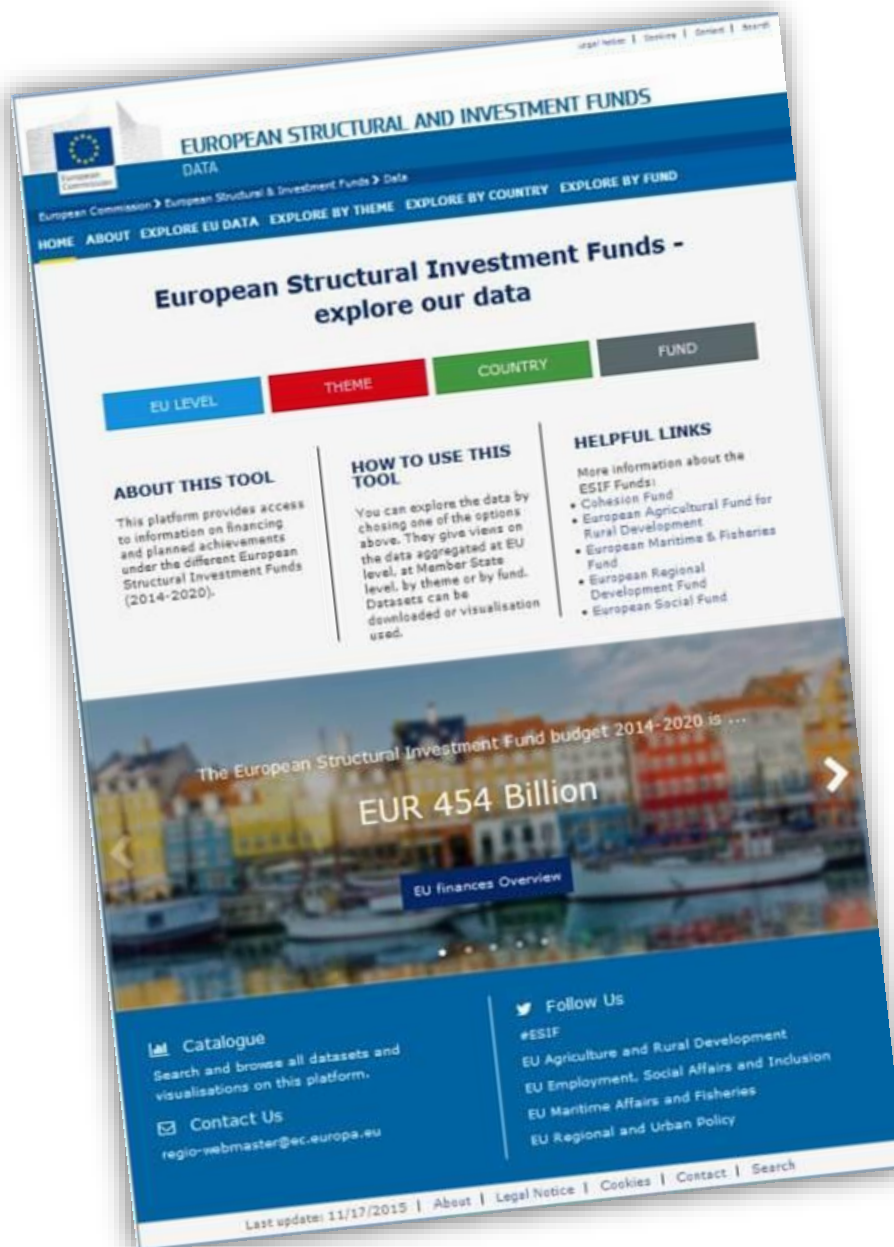
Partnership Agreement

- Setting out objectives and arrangements for using ERDF, Cohesion Fund, ESF+, EMFF, AMIF, ISF, BMVI, JTF at the beginning of the period
- Selected policy objectives
- Coordination, demarcation and complementarities between the Funds and other Union instruments
- Preliminary financial allocation by policy objective (thematic concentration requirements) and list of programmes with preliminary allocations
- Amount to be delivered through InvestEU and transfers between categories of region
- Summary of actions to reinforce the institutional capacity

Programmes

- Summary of the main development challenges and strategy for contribution to policy objectives
- Justification for selection of policy objectives and specific objectives
- Priorities - each corresponds to a single policy objective
- Description of specific objectives (actions, operations of strategic importance, target groups, indicators, types of intervention, targeted territories)
- Financing plan & Assessment of fulfilment of enabling conditions
- Communication and visibility & Partnership

More information



Proposals for 2021-2027:

https://ec.europa.eu/regional_policy/en/2021_2027/

Open data platform:

<https://cohesiondata.ec.europa.eu>

http://ec.europa.eu/regional_policy/en/policy/evaluations/data-for-research/

Project examples:

<https://ec.europa.eu/budget/euprojects/>

http://ec.europa.eu/regional_policy/EN/projects/

<http://ec.europa.eu/esf/main.jsp?catId=46>

List of Programmes and Managing authorities:

http://ec.europa.eu/regional_policy/en/atlas/programmes/

Thank you for your attention



#CohesionPolicy
#EUinmyRegion